

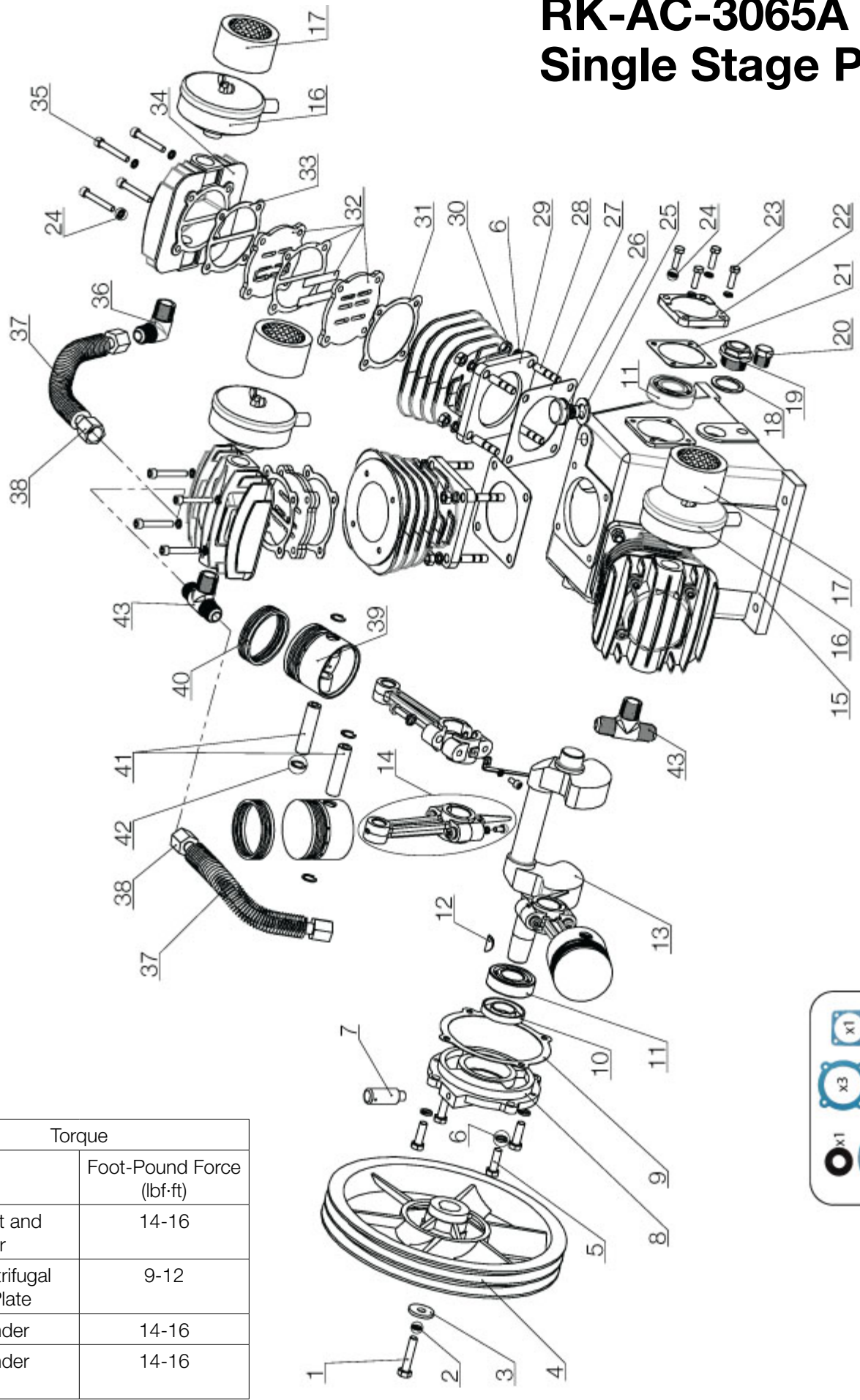
RK
COMPRESSORS

RK-AC-3065A
Single Stage Pump

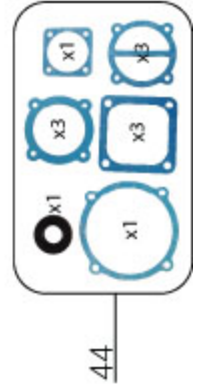


Équipements ESF inc.
6500, Armand-Viau Street
Quebec (Qc) Canada G2C 2J6
T (418) 845-2318
F (418) 845-5252
www.esfdirect.com

RK-AC-3065A Single Stage Pump



Torque	
Part	Foot-Pound Force (lb·ft)
Bolt, Front and End Cover	14-16
Bolt, Centrifugal Adapter Plate	9-12
Bolt, Cylinder	14-16
Bolt, Cylinder Head	14-16



RK-AC-3065A

Single Stage Pump

Part List

Item	No ESF	Descriptions	Qty
1	RK-030-0012	BOLT- FLYWHEEL	1
2	RK-030-0003	WASHER - FLYWHEEL BOLT	1
3	RK-030-0044	GASKET- FLYWHEEL	1
4	RK-030-0030	FLYWHEEL	1
5	RK-030-0014	BOLT- REAR COVER	4
6	RK-030-0004	WASHER - REAR COVER BOLT	28
7	RK-030-0015	BREATHER	1
8	RK-030-0036	REAR COVER	1
9	RK-030-0045	GASKET- REAR COVER	1
10	RK-030-0055	OIL SEAL	1
11	RK-030-0005	BEARING	2
12	RK-030-0050	KEY	1
13	RK-030-0018	CRANKSHAFT	1
14	RK-030-0016	CONNECTING ROD	3
15	RK-030-0017	CRANKCASE	1
16	RK-030-0002	AIR FILTER ASSY.	3
17	RK-030-0001	AIR FILTER ELEMENT	3
18	RK-030-0061	SEAL- OIL SIGHT GLASS	1
19	RK-030-0060	OIL SIGHT GLASS	1
20	RK-030-0027	OIL DRAIN PLUG	1
21	RK-030-0046	GASKET-FRONT COVER	1
22	RK-030-0035	FRONT COVER	1
23	RK-030-0013	BOLT- FRONT COVER	4
24	RK-030-0007	WASHER - FRONT COVER BOLT	4
25	RK-030-0028	SEAL- FILL OIL PLUG	1
26	RK-030-0025	FILL OIL PLUG	1
27	RK-030-0041	GASKET- CRANKCASE TO CYLINDER	3
28	RK-030-0010	BOLT- CYLINDER	12
29	RK-030-0020	CYLINDER	3
30	RK-030-0051	NUT- CYLINDER	12
31	RK-030-0042	GASKET- CYLINDER	3
32	RK-030-0075	VALVE ASSY.	3
33	RK-030-0043	GASKET- CYLINDER HEAD	3
34	RK-030-0021	CYLINDER HEAD	3
35	RK-030-0011	BOLT- CYLINDER HEAD	12
36	RK-030-0023	ELBOW	1
37	RK-030-0026	FINNED TUBE	2
38	RK-030-0008	NUT - INTERCOOLER	5
39	RK-030-0066	PISTON	3

Item	No ESF	Descriptions	Qty
40	RK-030-0068	PISTON RING SET	3
41	RK-030-0065	PISTON PIN	3
42	RK-030-0067	PISTON CIRCLIP	6
43	RK-030-0070	TEE CONNECTOR	2
44	RK-030-0040	GASKET SET Includes: Item 9 1 x RK-030-0045 GASKET- REAR COVER Item 10 1 x RK-030-0055 OIL SEAL Item 21 1 x RK-030-0046 GASKET-FRONT COVER Item 27 3 x RK-030-0041 GASKET- CRANKCASE TO CYLINDER Item 31 3 x RK-030-0042 GASKET- CYLINDER Item 33 3 x RK-030-0043 GASKET- CYLINDER HEAD	1

WARNING

This pump has a special "break-in" oil, which must be changed after the first 10 hours of operation. Replacement oil should be SAE 30 non detergent.